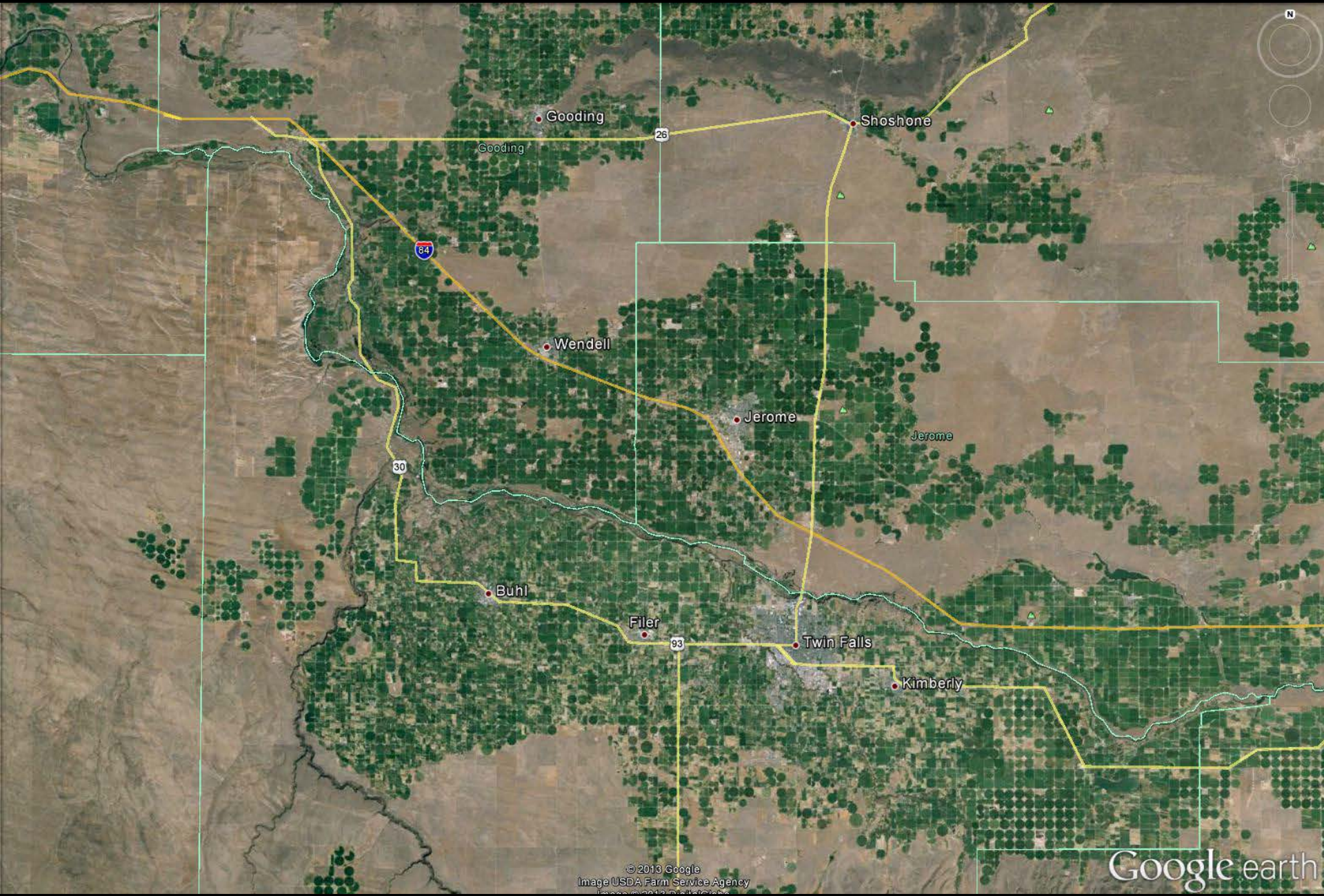


USR – Idaho





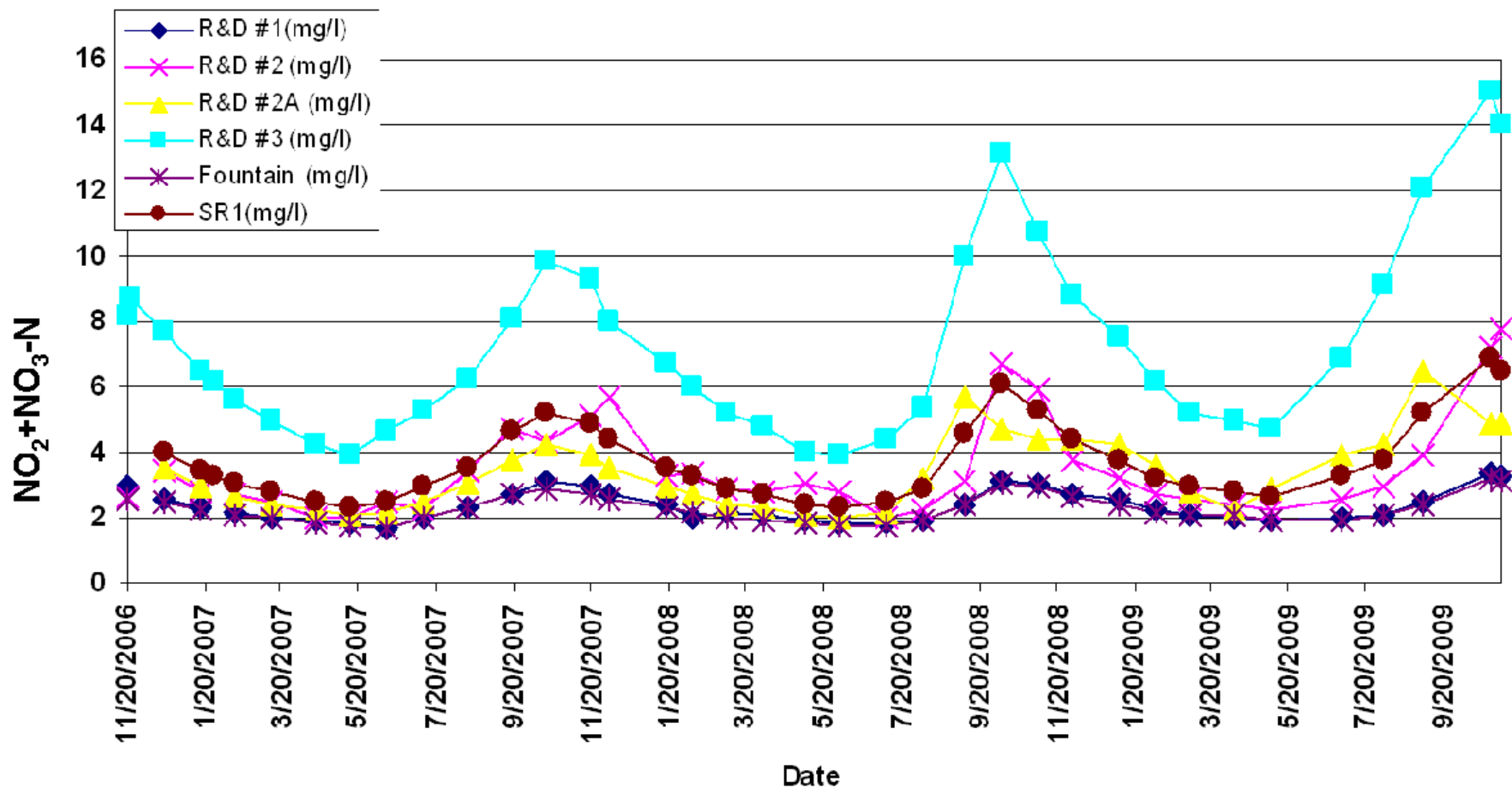
Google earth

Imagery Date: 9/22/2011 1992

© 2012 Google
lat 42.676755° lon -114.770522° elev 3253 ft

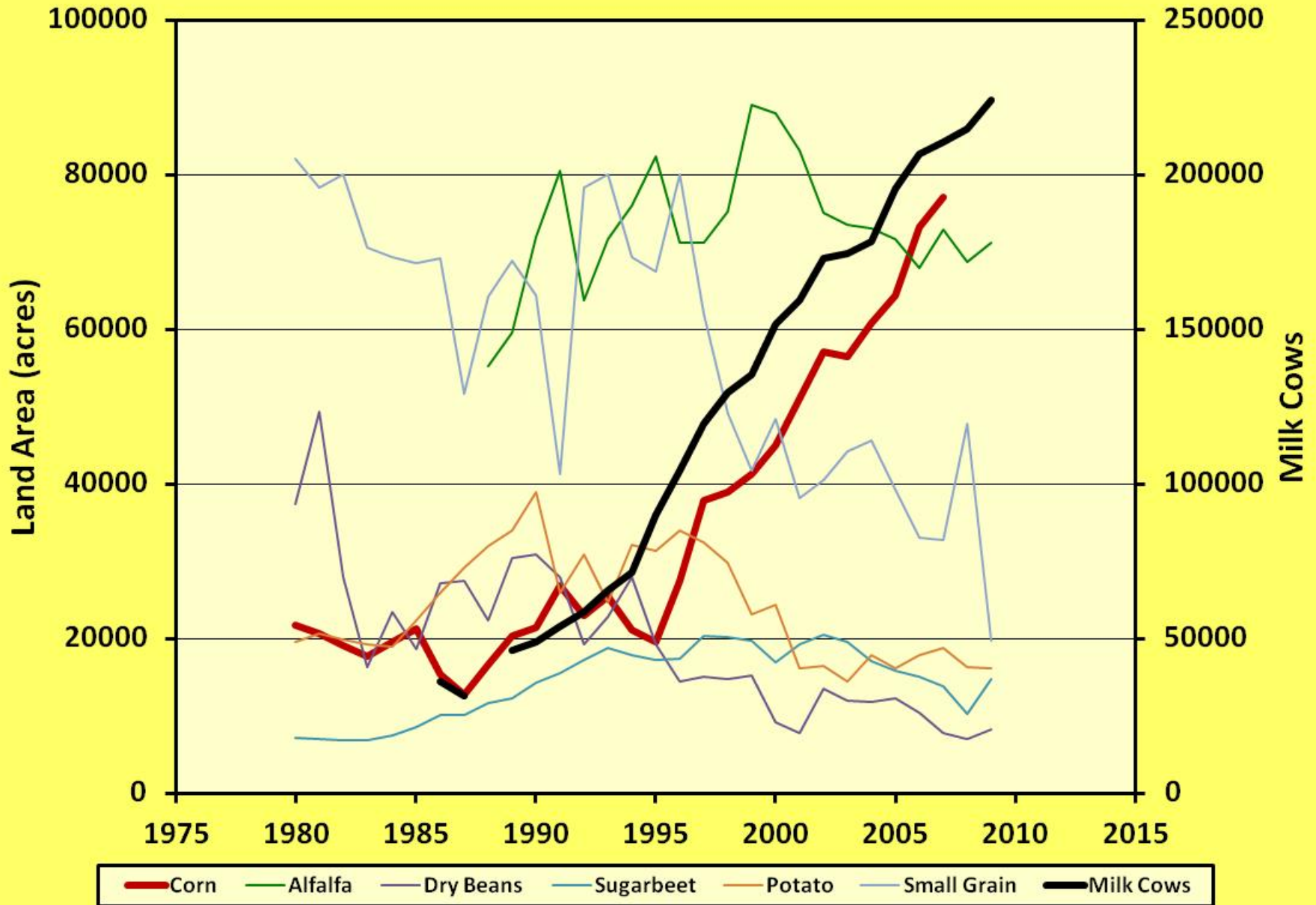
Eye alt 15251 ft





Monthly nitrate concentration data for the Snake River Farms facility. Data were provided by Clear Springs Foods, Inc. From Kerri Schorzman, Joe Baldwin, John Bokar. 2009. Possible sources of nitrate to the springs of southern Gooding County, Eastern Snake River Plain, Idaho. Idaho DEQ Ground Water Quality Technical Report No. 38.

Jerome and Gooding Counties



Dairies & Cropland in Jerome and Gooding Co.

- **231,000 milk cows require**
 - 3000 to 4000 acres of pens (600 ft²/cow)**
 - ~600 acres of wastewater ponds (100 ft²/cow)**
- **218,000 acres of cropland**

Nitrogen Balance

NH₃ emissions
28 mill kg/yr

Fecal N
32 mill kg/yr

+

Urine N
44 mill kg/yr

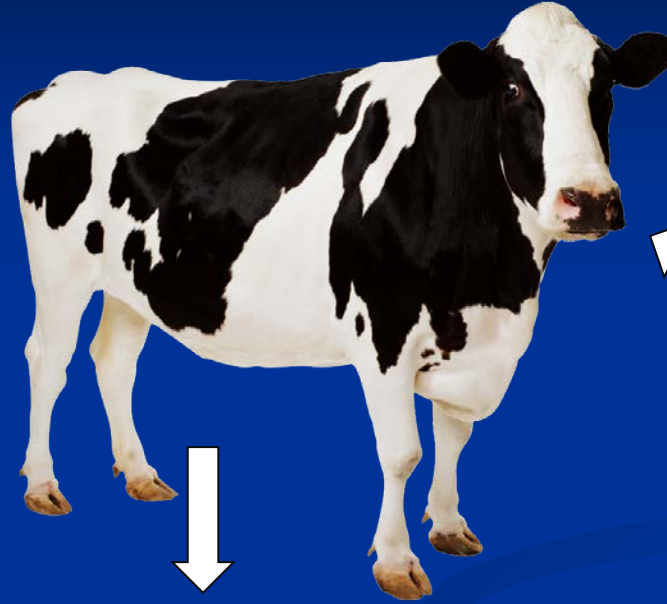
Manure Export
47 mill kg/yr

Lot N (top 6")
1 mill kg

Milk N
26 mill kg/yr

N Intake
1059 mill Kg/yr

Cropland
982,699 acres
100 lbs N/acre
44.5 mill kg N/yr



Assumptions:

435,000 cows in Magic Valley stocking rate of 0.006 ha/cow all on open lots
2,200,000 kg/ha furrow slice



100 m

9

7

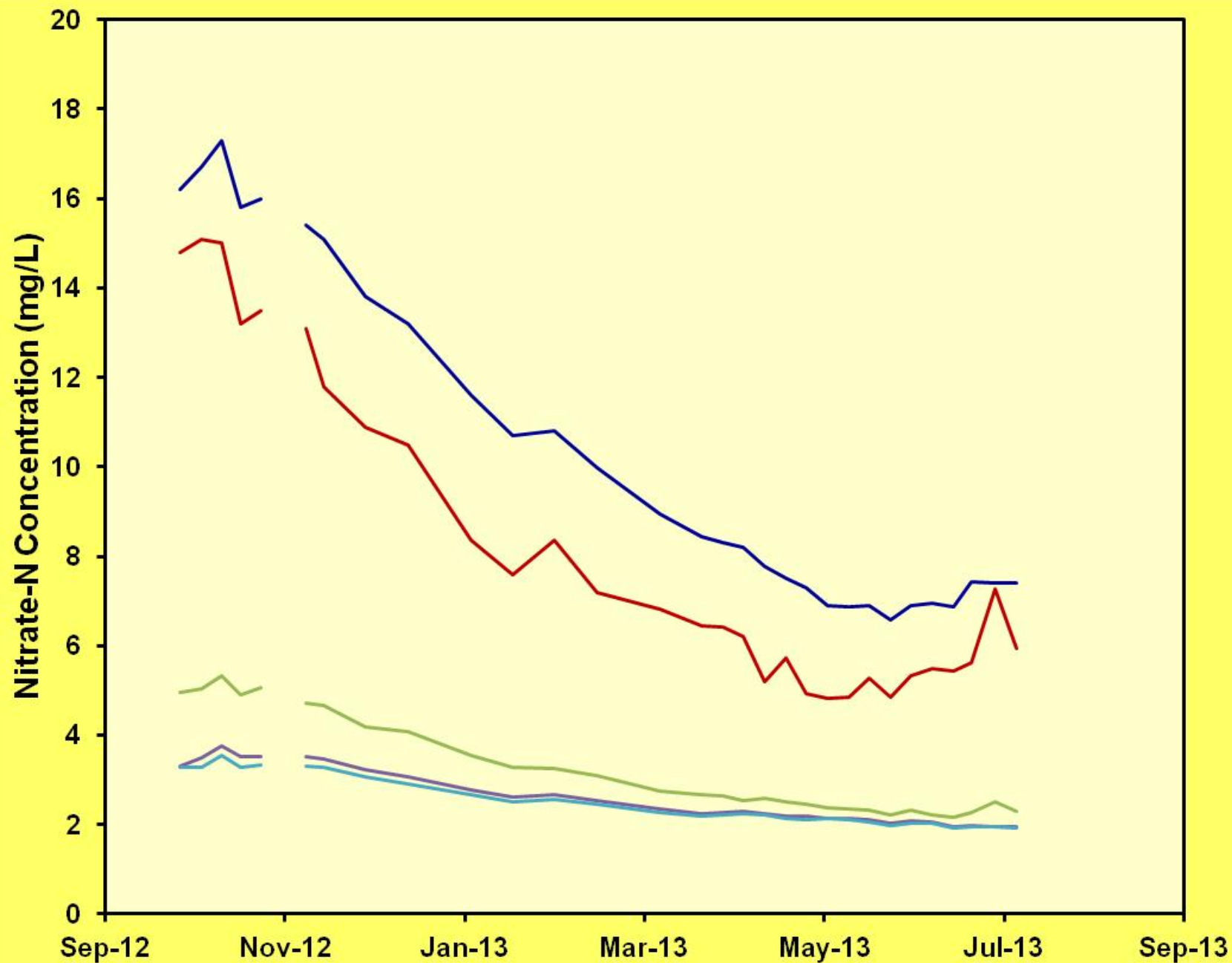
6

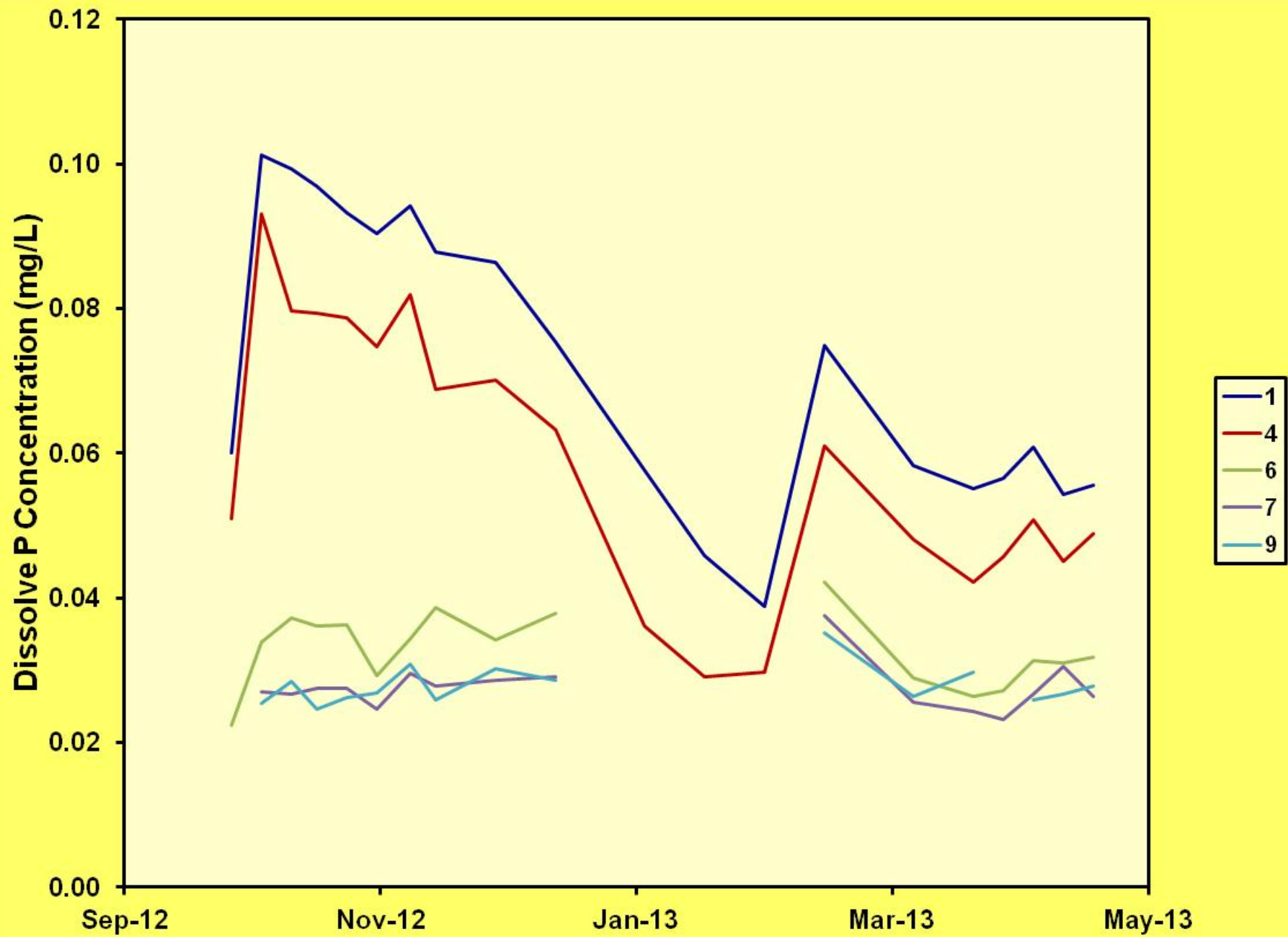
4

1

© 2012 Google

Google earth







E.3600.S

S.2200.E

S.2100.E

Niagara Springs Rd

River Rd E

Google earth

© 2012 Google

Imagery Date: 9/22/2011 1993

lat 42.668896° lon -114.673749° elev 3388 ft

Eye alt 16836 ft



Aug 20, 2009

outlet

Sprinkler

Furrow

2

1

Image USDA Farm Service Agency
©2011 Google

©2010 Google

Imagery Date: Jun 24, 2009

lat: 42.513283° lon: -114.352163° elev: 3962 ft

Eye alt: 12719 ft

